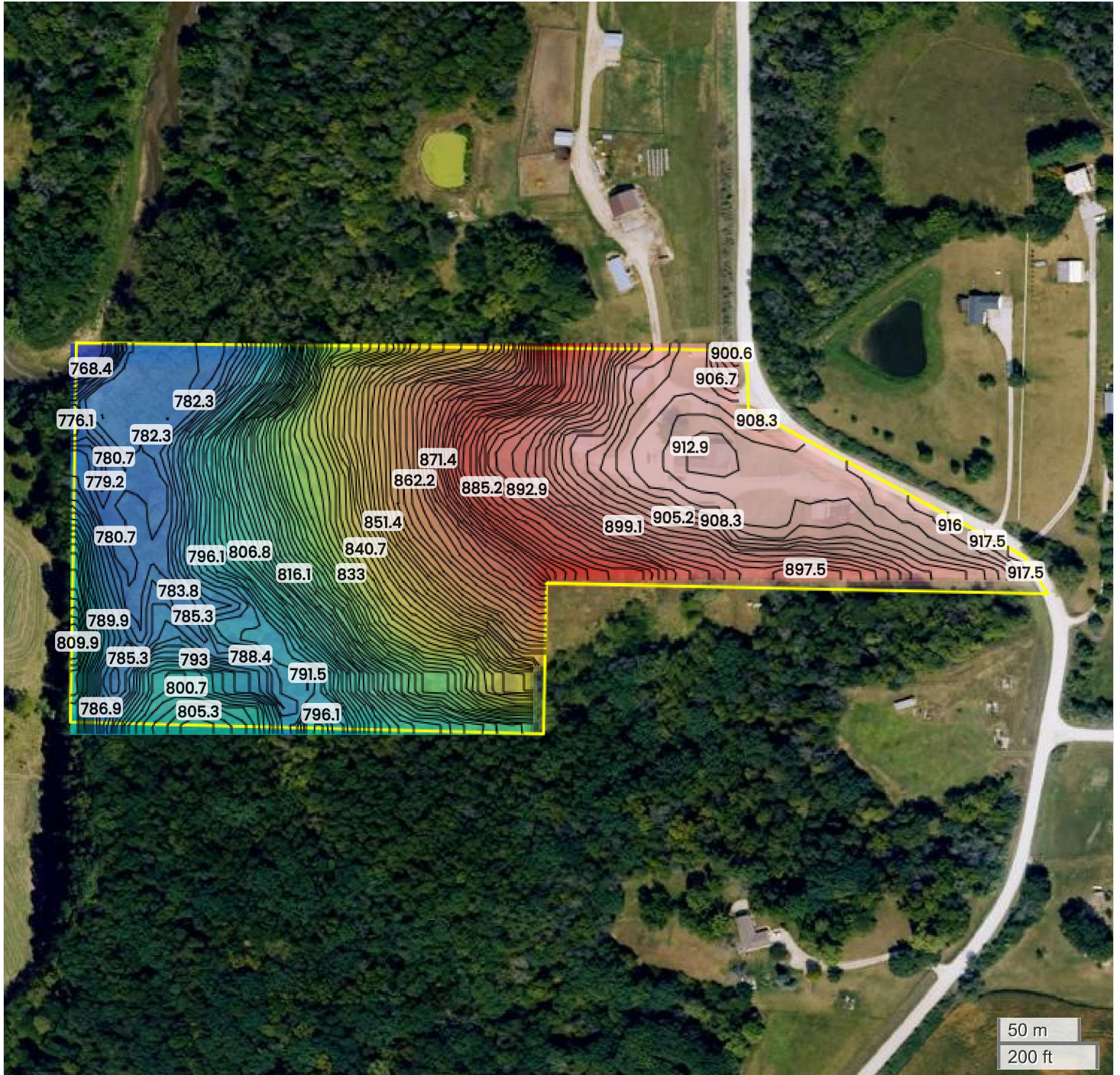




22.94 ACRES - WARREN COUNTY, IOWA

TOPOGRAPHY



50 m
200 ft

768 ft

918 ft



Center: 41.459344, -93.482910

22-77N-23W

Palmyra Township
Warren County, IA

Source: USGS 10m DEM
Interval(ft): 3
Max: 917.5 ft
Min: 768.4 ft
Range: 149.1 ft
Average: 843.0 ft

FarmWorth, LLC makes no warranties, express or implied, regarding the accuracy of any information provided through FarmWorth.com. User is solely responsible for independently verifying all information prior to use and waives any claims against FarmWorth, LLC arising from inaccuracies in such information.